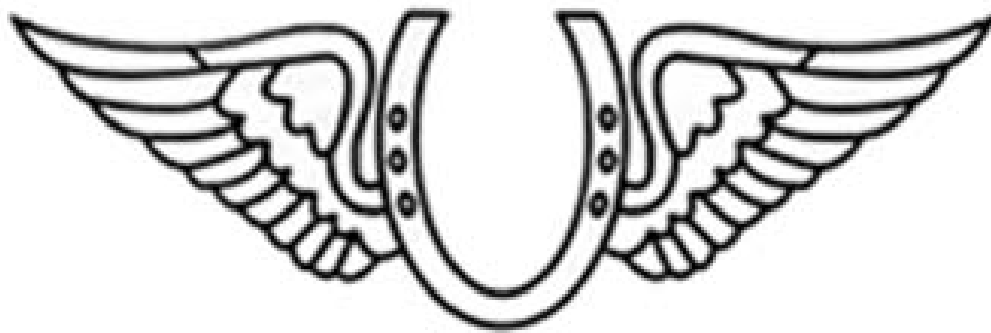
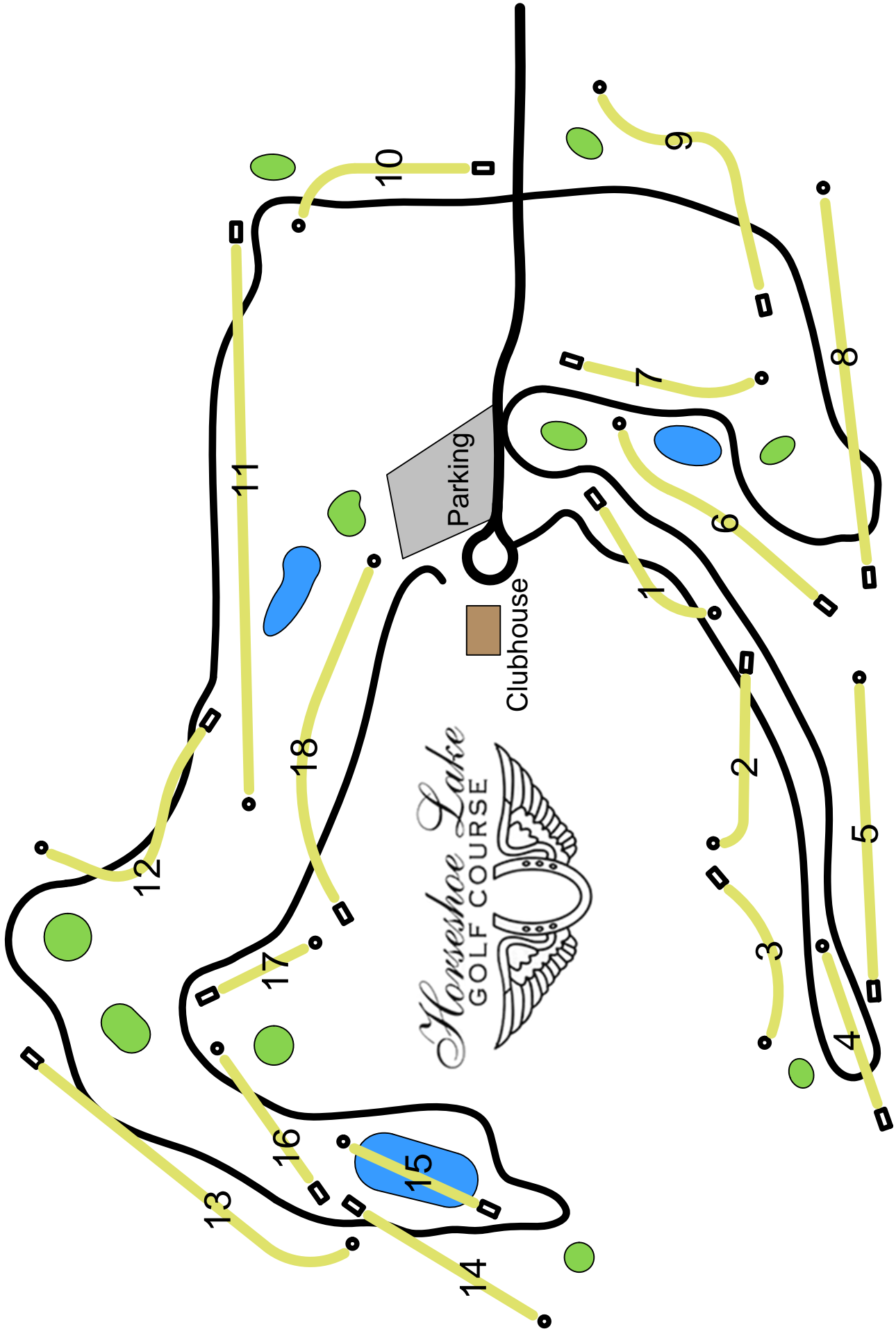


The Disc Golf Course  
at  
*Horseshoe Lake*



In conjunction with





*Horseshoe Lake*  
GOLF COURSE

Parking

Clubhouse

10

9

8

7

6

1

2

5

3

4

18

12

17

16

15

13

14

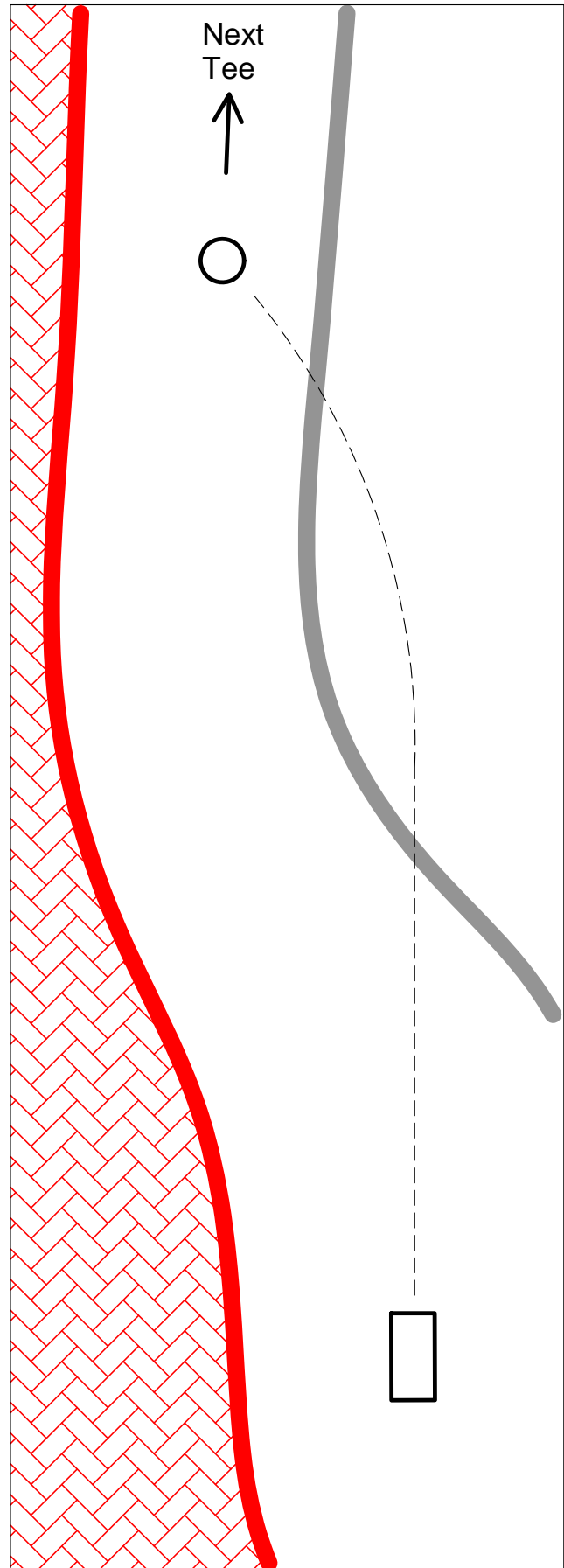
# Hole 1

HLGC Hole 1

Par 3  
330 feet

Out of Bounds:  
-Path on left and over.

Next Tee:  
On the left side of  
HLGC Hole 1 fairway.



# Hole 2

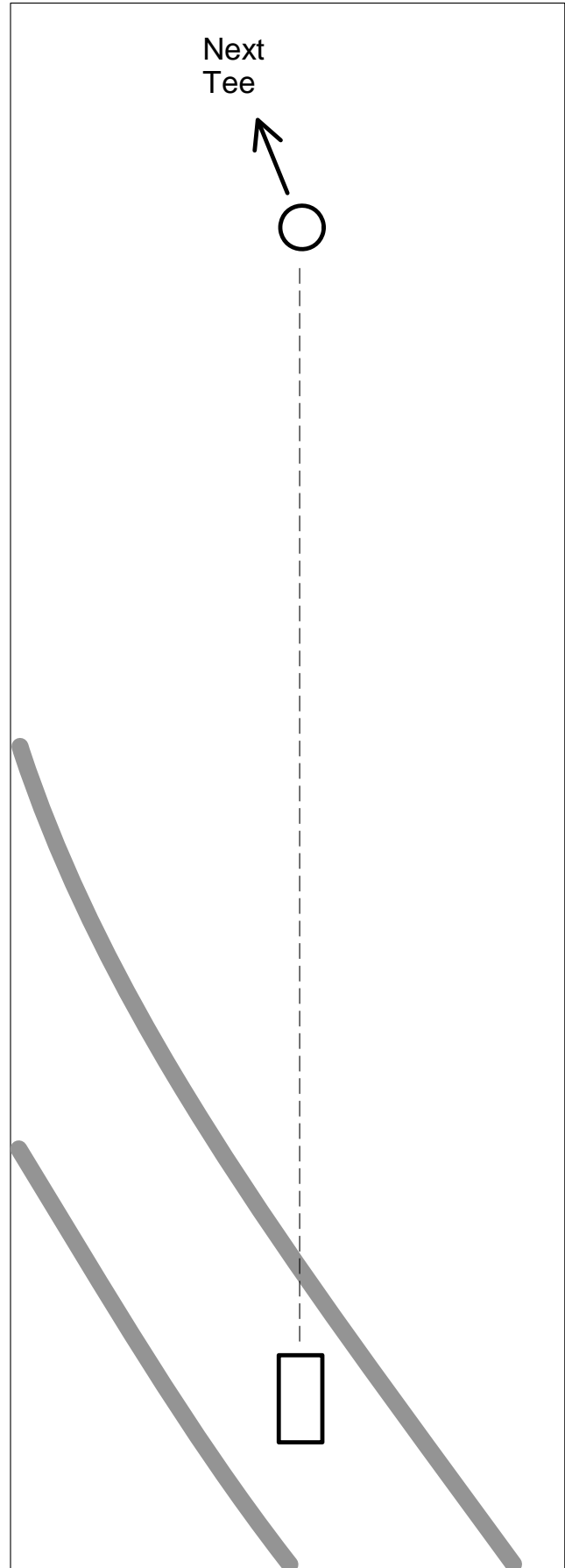
HLGC Hole 1

## Par 3

## 320 feet

Out of Bounds:  
-None.

Next Tee:  
On the right side of  
HLGC Hole 1 fairway  
in the trees.



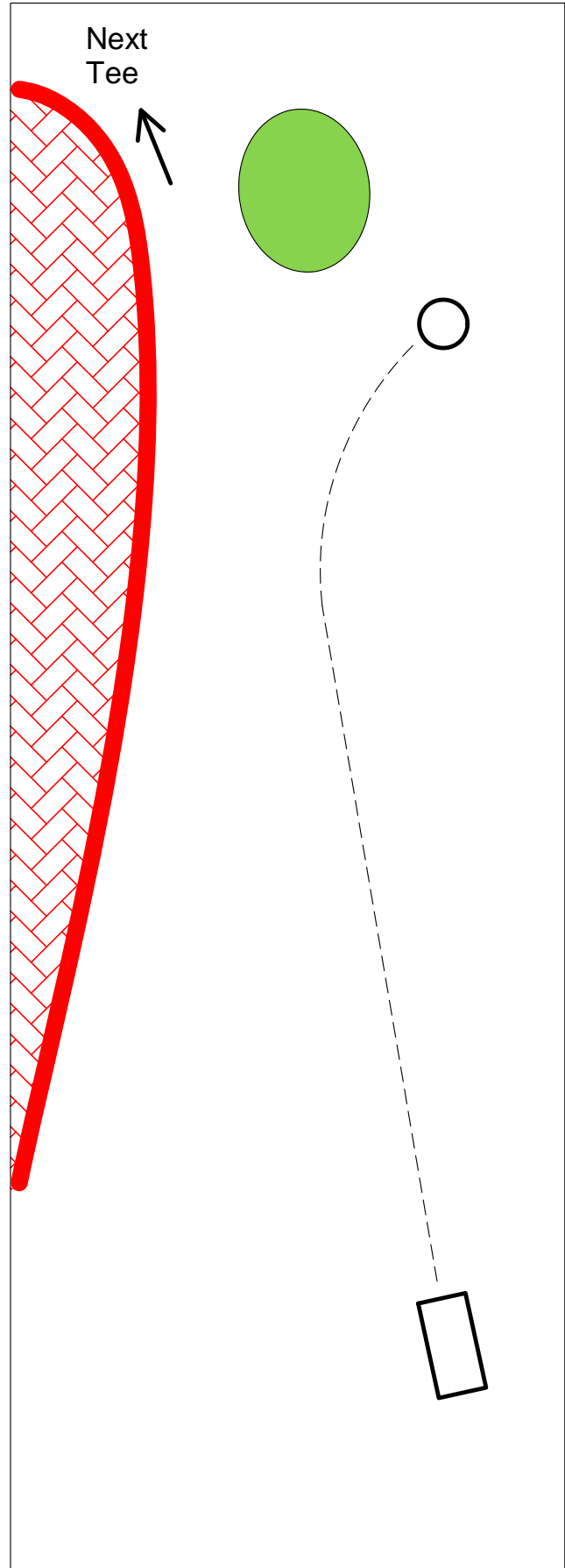
# Hole 3

HLGC Hole 1

Par 3  
350 feet

Out of Bounds:  
-Path on left and over.  
(i.e. inside the loop  
made by the cart path)  
-HLGC Putting green  
including fringe.

Next Tee:  
Follow path on the left  
to HLG C Hole 2.



# Hole 4

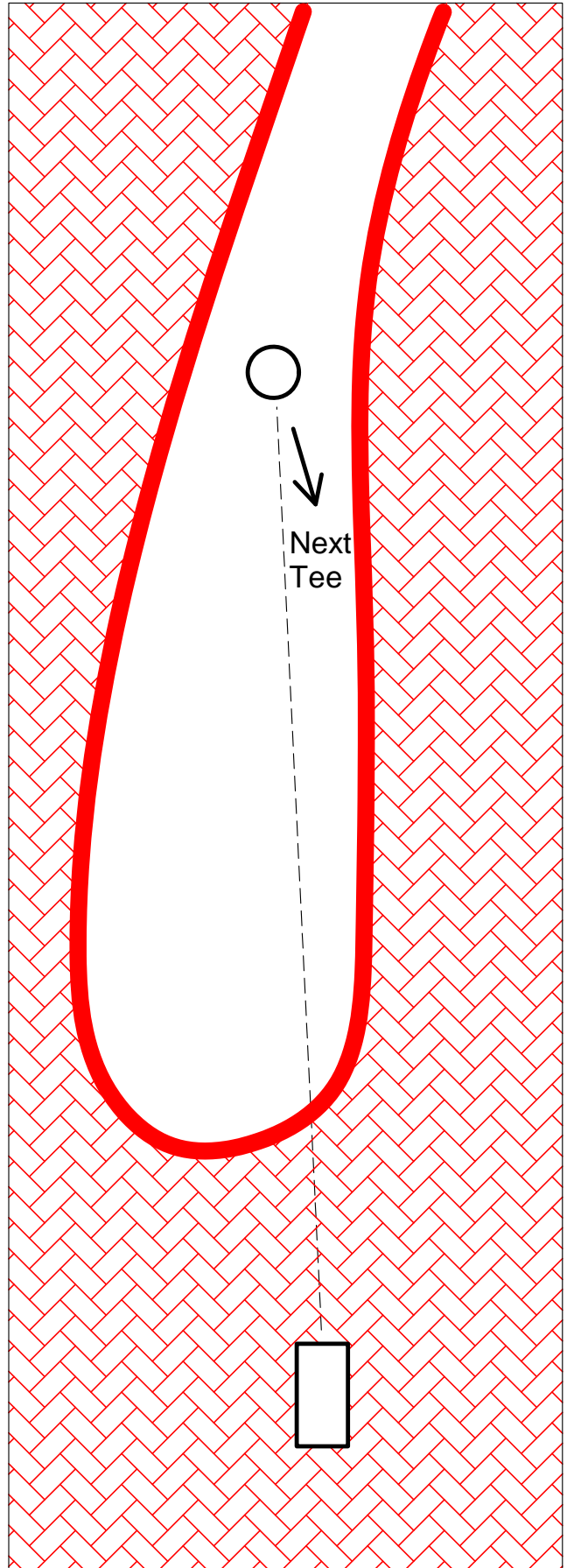
HLGC Hole 2

Par 3  
300 feet

**Out of Bounds:**  
The path and all areas outside the peninsula made by the path.  
(i.e. the only in bounds area is the ground inside the loop made by the path).

Tee throws that never cross the cart path must re-tee. All other out of bounds throws play with normal OB options.

**Next Tee:**  
In front of HLG hole 2 red tee.



# Hole 5

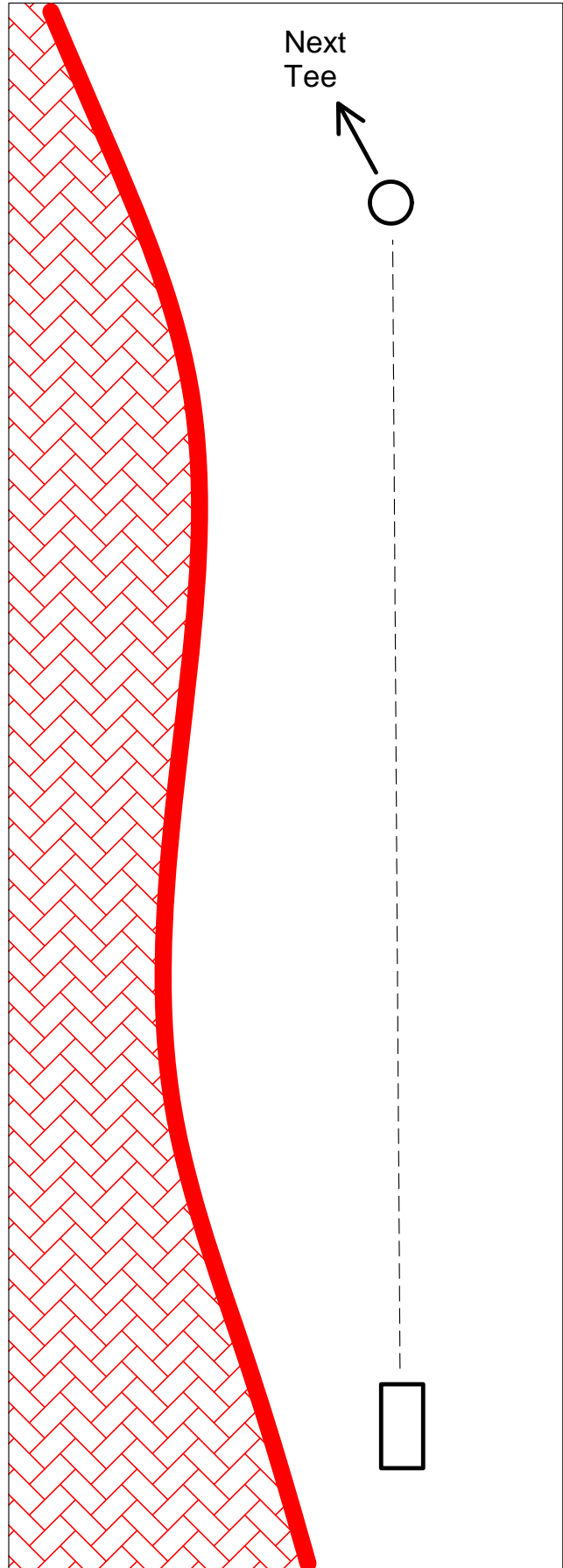
HLGC Hole 2

## Par 4

## 610 feet

Out of Bounds:  
-Path on left and over.

Next Tee:  
On the right side of  
HLGC Hole 2 fairway  
in the trees.



# Hole 6

HLGC Hole 2

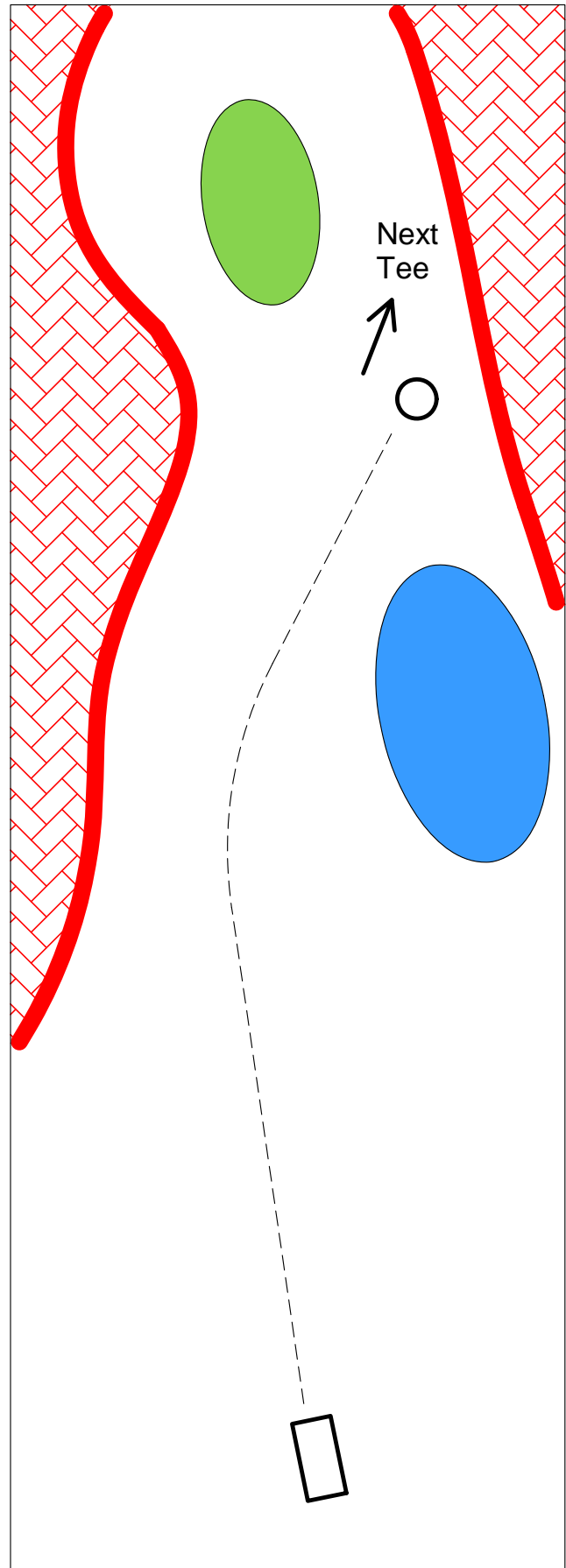
Par 4  
555 feet

Out of Bounds:

- Path on left and over.
- Path on right and over.
- HLGC putting green including fringe.
- Pond.

Next Tee:

Follow cart path to  
HLGC Hole 3 tee.





# Hole 7

HLGC Hole 3

## Par 3

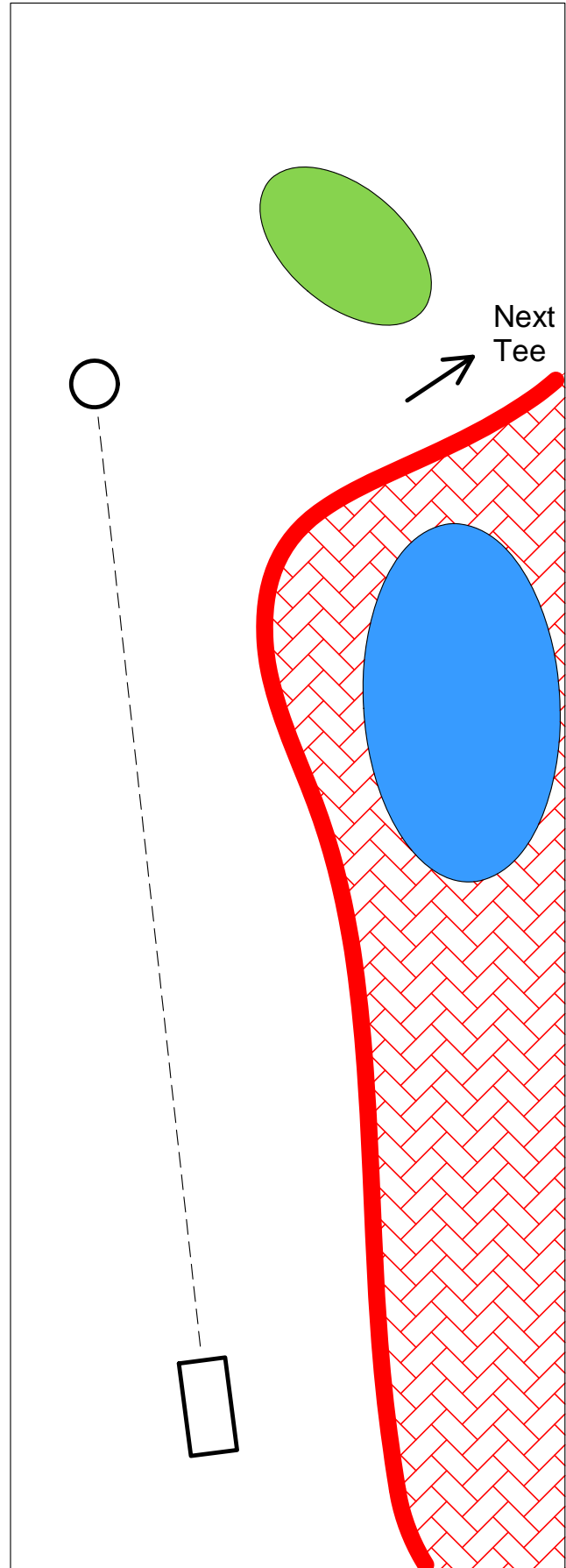
## 330 feet

Out of Bounds:

- Path on right and over.
- HLGC putting green, including fringe.

Next Tee:

Follow cart path to  
HLGC Hole 4 tee.



# Hole 8

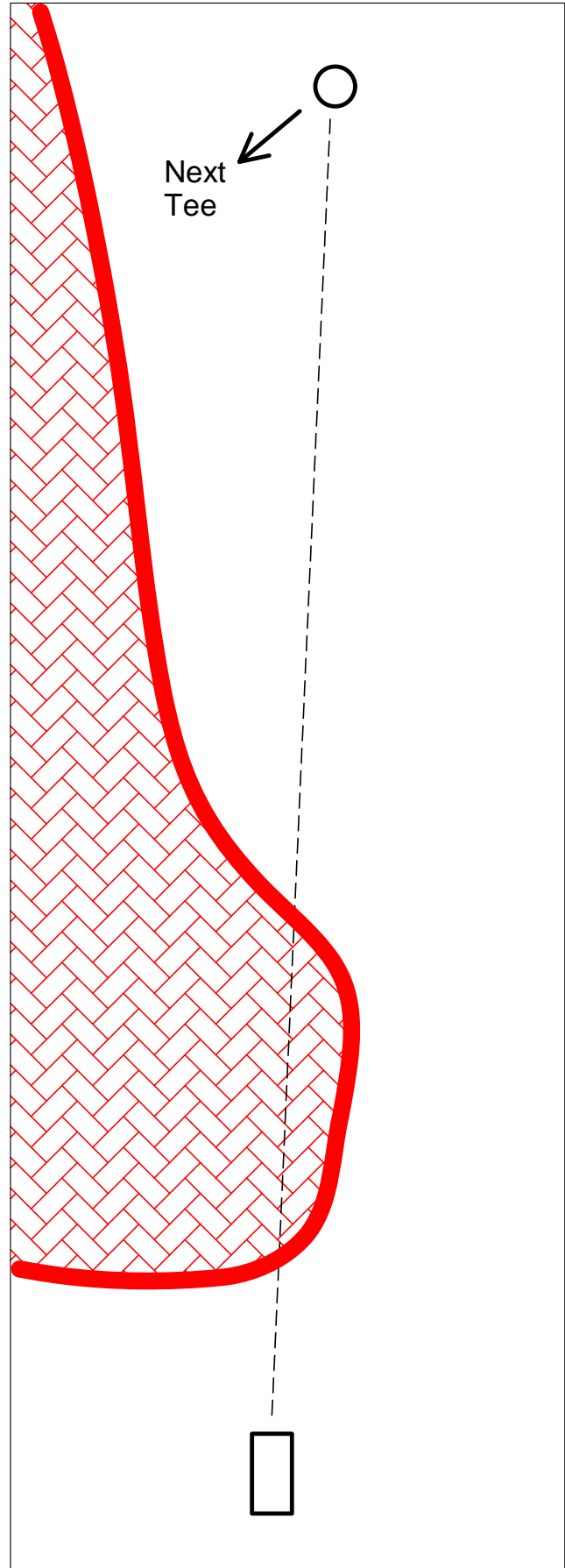
HLGC Hole 4

## Par 4

## 620 feet

Out of Bounds:  
-Path on left and over.

Next Tee:  
On the left side of  
HLGC Hole 4 fairway  
in the trees.



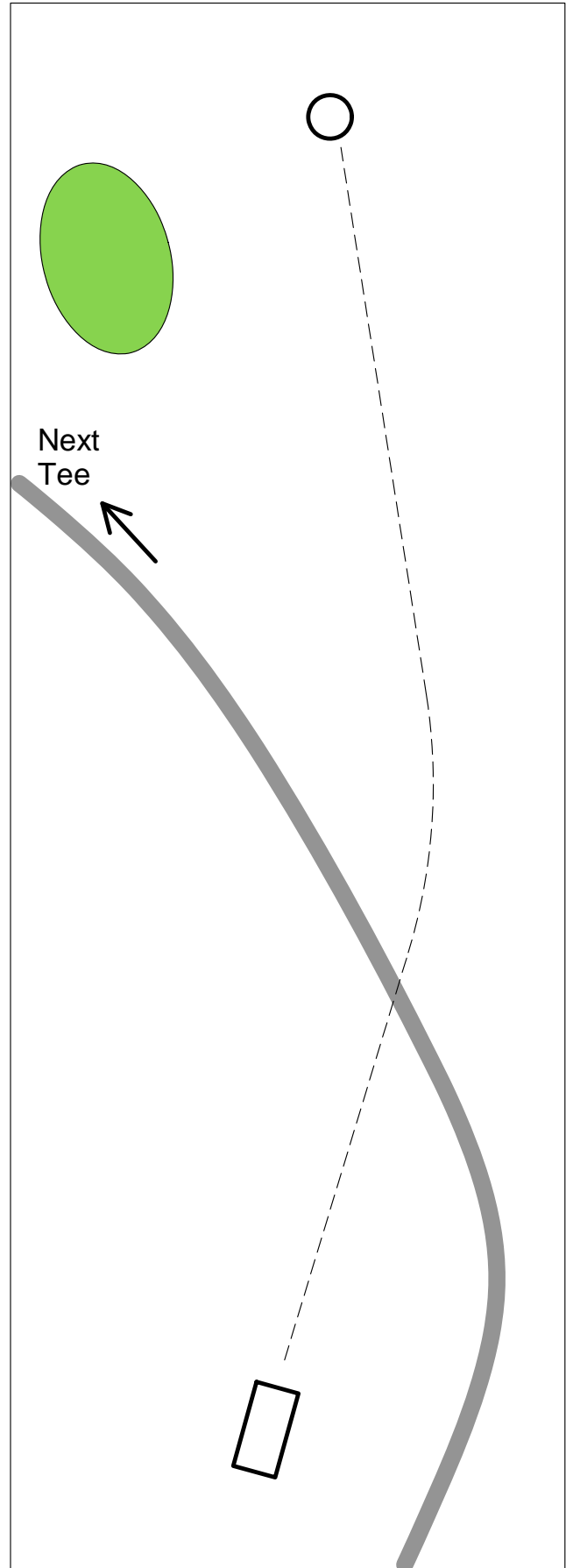
# Hole 9

HLGC Hole 4

Par 4  
600 feet

Out of Bounds:  
-HLGC putting green,  
including fringe.

Next Tee:  
Follow cart path to  
HLGC Hole 5 tee.



# Hole 10

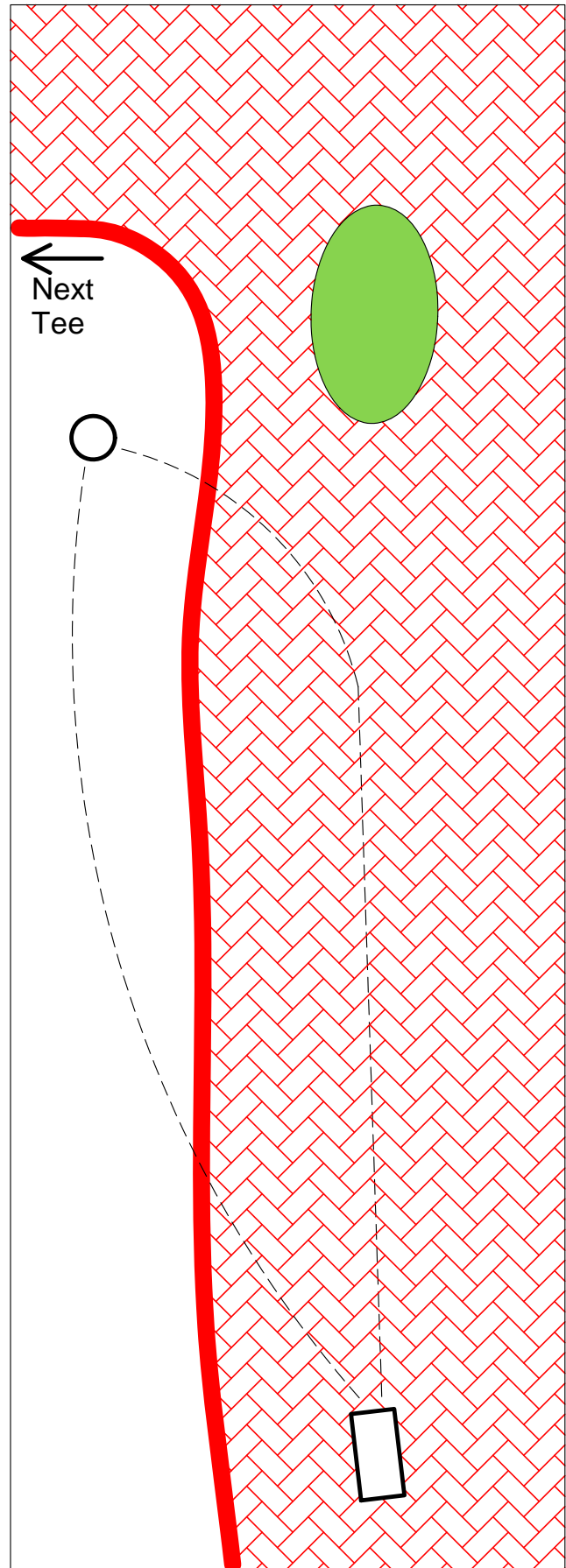
HLGC Hole 5

Par 3  
340 feet

Out of Bounds:  
-Path on right of basket  
and over.

Tee throws that never  
cross the cart path must  
re-tee. All other out of  
bounds throws play with  
normal OB options.

Next Tee:  
Follow cart path to  
HLGC Hole 6 tee.



# Hole 11

HLGC Hole 6

Par 5  
990 feet

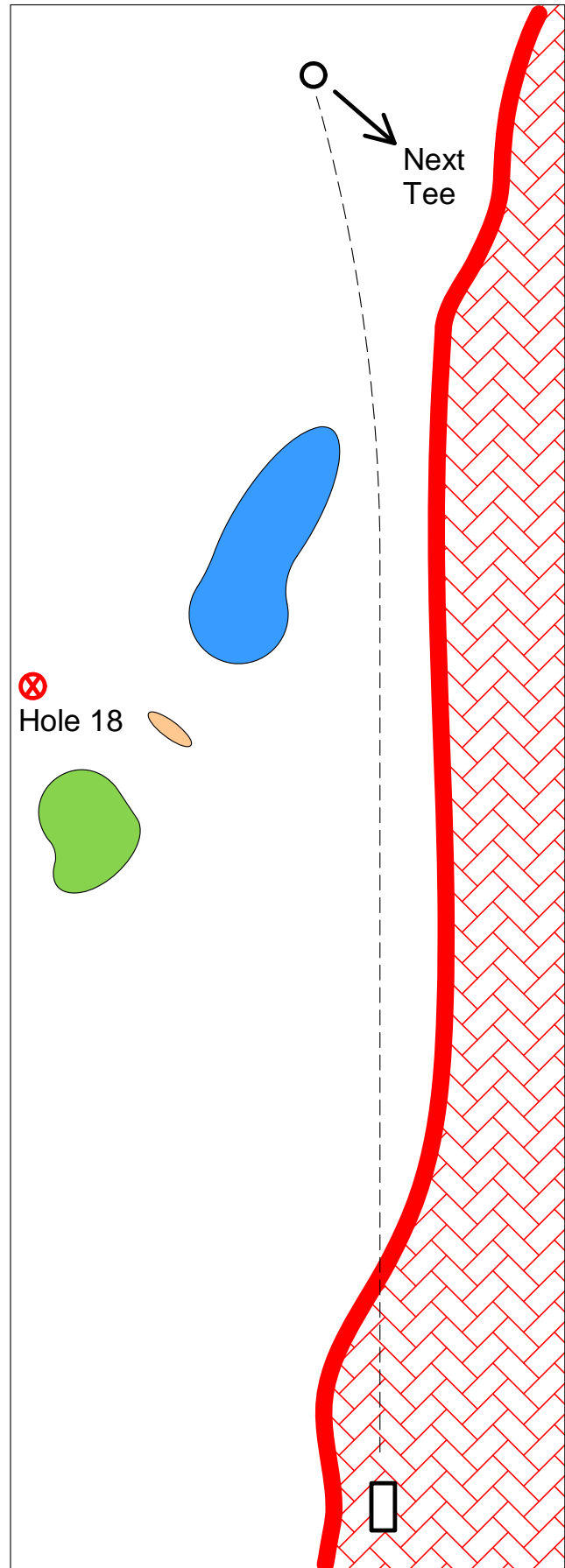
Out of Bounds:

- Path on right and over.
- HLGC putting green, including fringe.
- Pond.
- Sand trap.

Tee throws that never cross the cart path must re-tee. All other out of bounds throws play with normal OB options.

Next Tee:

On the right side of HLGC Hole 6 fairway in the trees.



# Hole 12

HLGC Hole 6

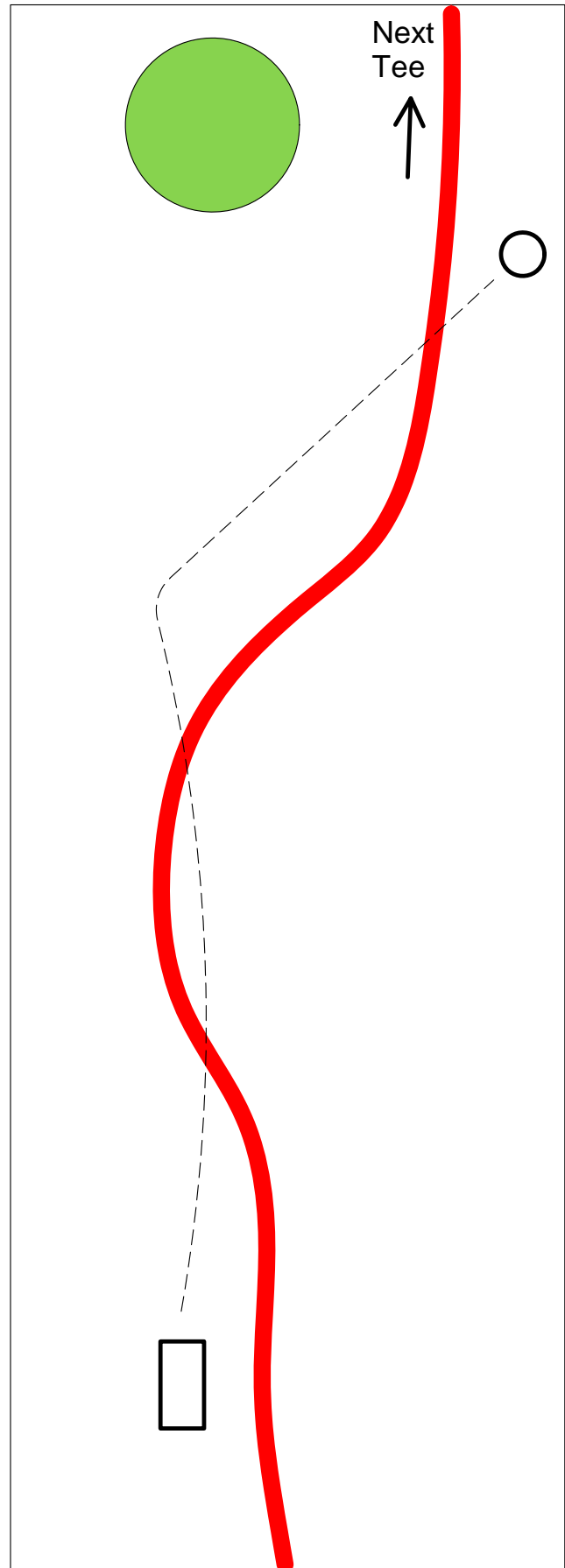
Par 4  
600 feet

Out of Bounds:

- Paved path. (Treat path like an OB creek.)
- HLGC putting green, including fringe.

Next Tee:

Follow cart path to  
HLGC Hole 7 tee.



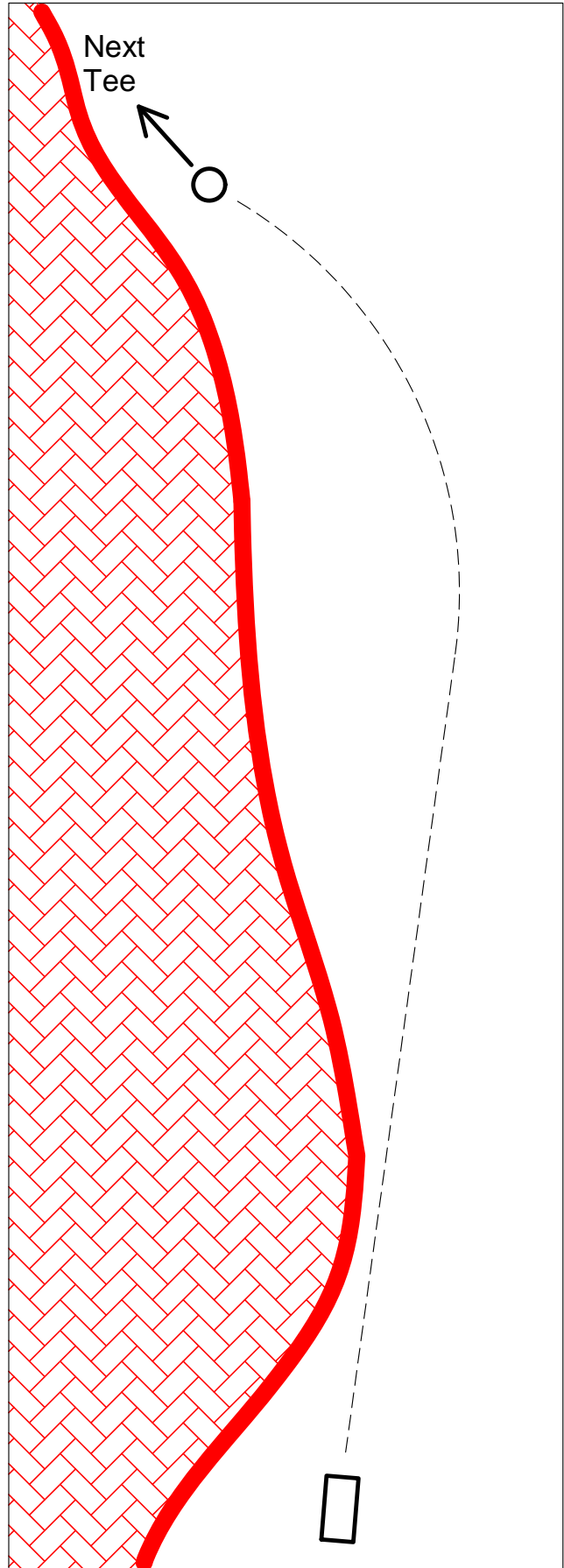
# Hole 13

HLGC Hole 7

Par 4  
670 feet

Out of Bounds:  
-Path on left and over.

Next Tee:  
On the left side of  
HLGC Hole 7 fairway  
near the path.



# Hole 14

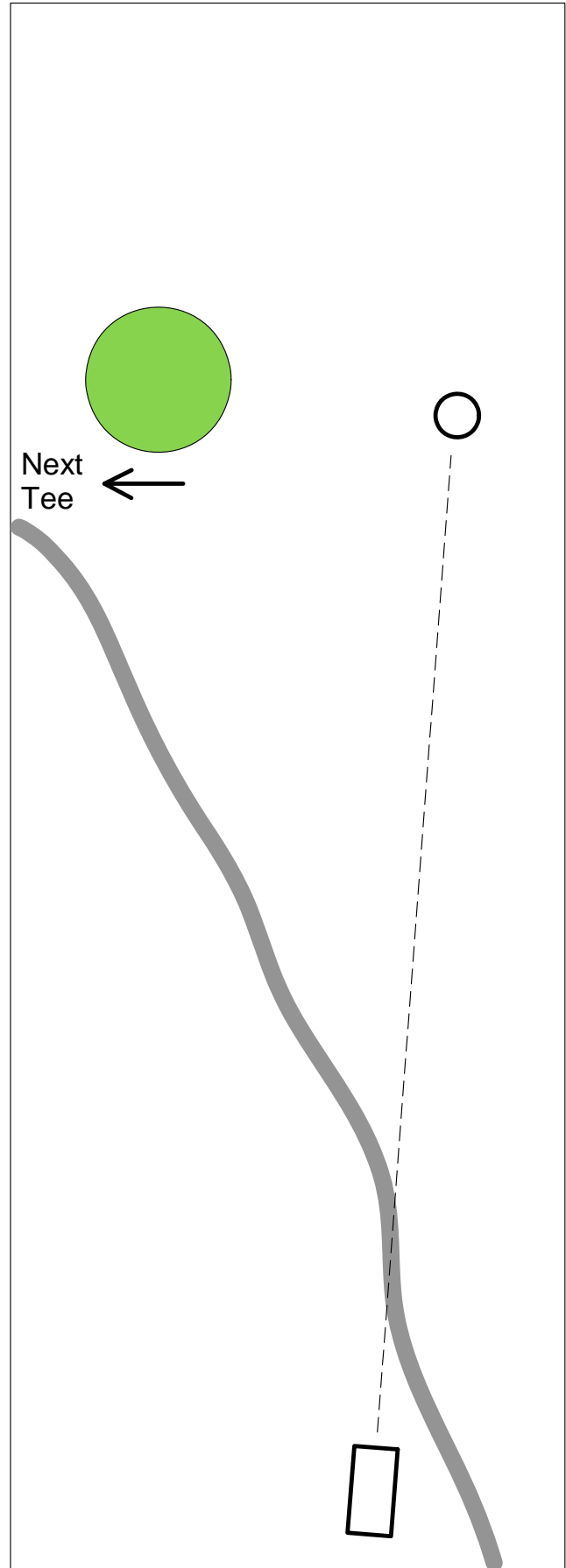
HLGC Hole 7

## Par 3

## 280 feet

Out of Bounds:  
-HLGC putting green,  
including fringe.

Next Tee:  
Follow cart path to  
HLGC Hole 8 tee.





# Hole 15

HLGC Hole 8

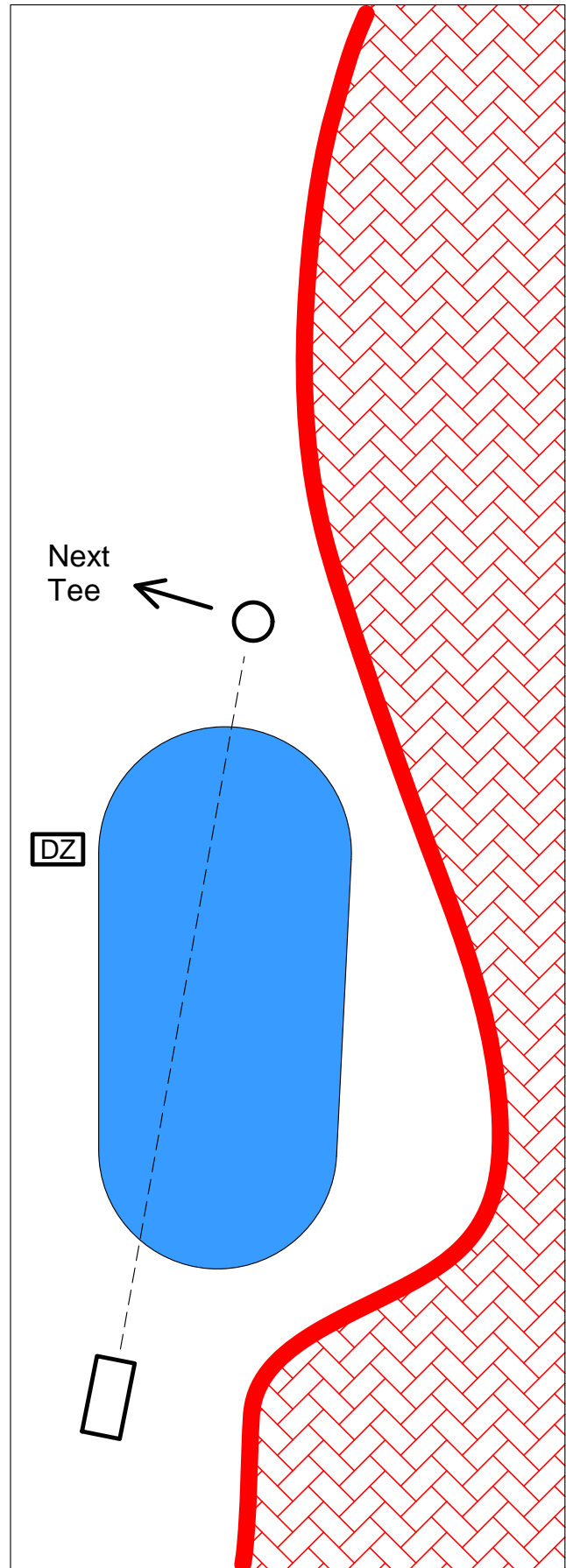
Par 3  
270 feet

**Alternate Tee:**  
Players have the option to tee off from the drop zone with a 2 stroke penalty added to their score for the hole.

**Out of Bounds:**  
-Path on right and over.  
-Pond.

All out of bounds throws play with normal OB options. Out of bounds tee throws may use the drop zone.

**Next Tee:**  
On the left side of HLGC Hole 8 fairway.



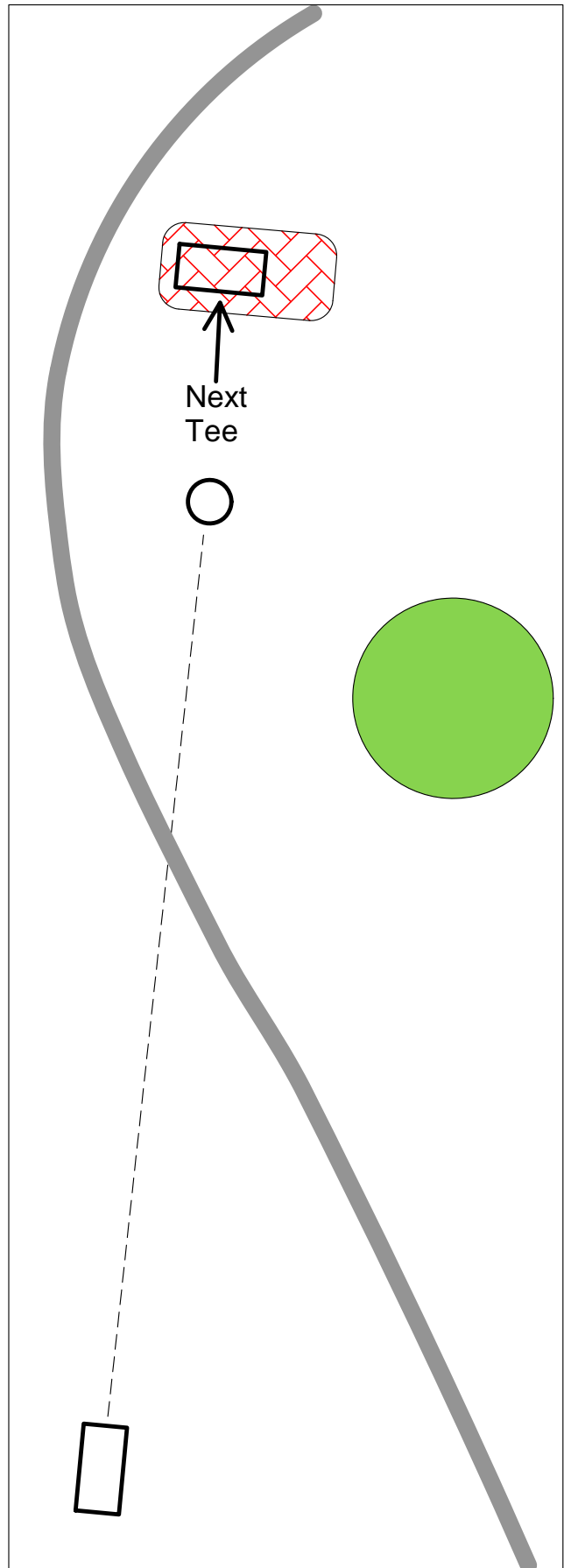
# Hole 16

HLGC Hole 8

Par 3  
340 feet

Out of Bounds:  
-HLGC putting green,  
including fringe.  
-HLGC tee box with  
hole 17's tee box.

Next Tee:  
Follow cart path to  
HLGC Hole 9 tee.



# Hole 17

HLGC Hole 9

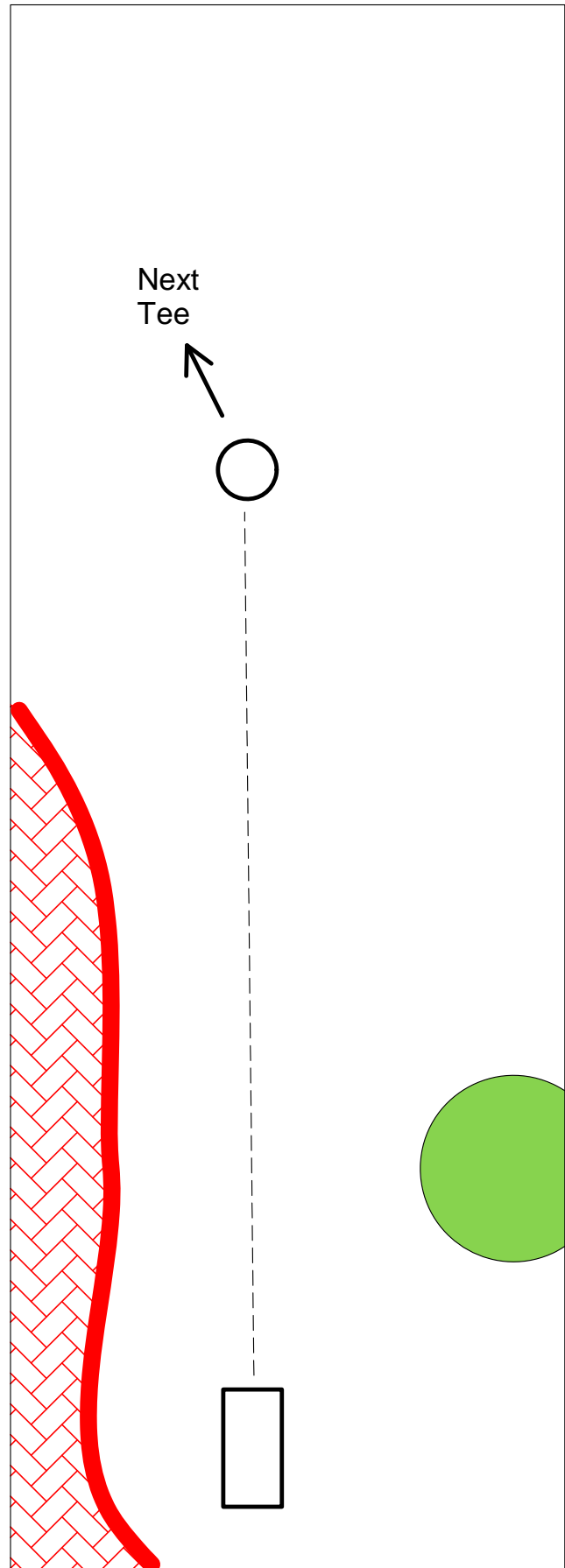
Par 3  
280 feet

Out of Bounds:

- Path on left and over.
- HLGC putting green, including fringe.

Next Tee:

On the right side of  
HLGC Hole 9 fairway  
in the trees.



# Hole 18

HLGC Hole 9

Par 4  
550 feet

Out of Bounds:

- Path on right and over.
- Pond.
- Sand trap.
- Past parking lot net.
- Pavement.
- HLGC putting green, including fringe.

Tee throws that never cross the cart path must re-tee. All other out of bounds throws play with normal OB options.

